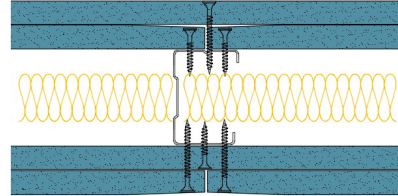


50-S-59(25) - SPEEDLINE System Data Sheet - Version V1 (24-10-23)

SPEEDLINE 50mm 'C' Stud Partition @600mm Ctrs,
with 2x Siniat GTEC 12.5mm dB Board each side,
25mm APR



System Performance Breakdown

Fire Resistance:

BS476 Part 22:1987:

Test Ref & Date or Applied Ref & Report:

Max Height:

Thickness:

Duty Grade: BS 5234: Part 2:1992:

Sound Insulation:

60/60 Minutes (Integrity/Insulation).

- BRE Report P102396-1011C

Refer to Speedline Specification Clause

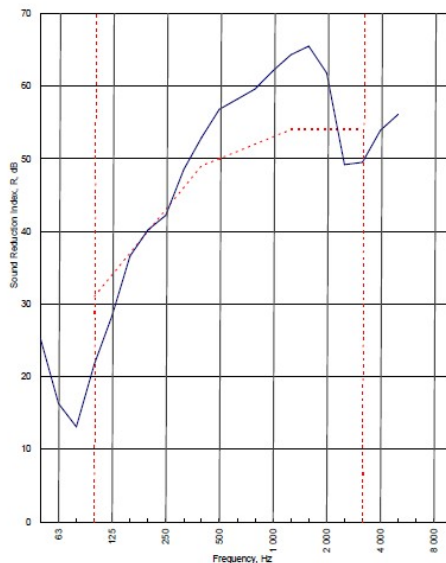
102 mm. (At Base Track, Excluding Finishes)

Severe - Annexes A-F

50 R_wdB, Date Tested or Assessed Against - 27/07/2011

Test Code:
H17503AA
Test Date:
27/07/2011

Freq. Hz	R dB
50	25.2
63	16.3
80	13.1
100	21.7
125	28.4
160	36.6
200	40.2
250	42.2
315	48.5
400	52.9
500	56.8
630	58.2
800	59.6
1 000	62.1
1 250	64.3
1 600	65.5
2 000	61.8
2 500	49.2
3 150	49.5
4 000	53.9
5 000	56.1
6 300	
8 000	
10 000	



Rating according to BS EN ISO 717-1:1997
R_w (C;Ctr) = 50 (-3;-10) dB
 Max dev. 9.3 dB at 100 Hz

C ₅₀₋₃₁₅₀ = -7 dB	C ₅₀₋₅₀₀₀ = -6 dB	C ₁₀₀₋₅₀₀₀ = -2 dB
C _{1,50-3150} = -18 dB	C _{1,50-5000} = -18 dB	C _{1,100-5000} = -10 dB

Evaluation based on laboratory measurement results obtained by an engineering method.

TESTED AT ONE OF THE UKAS ACCREDITED LABORATORIES BELOW

- B.T.C (H-Ref on Graph) 
- B.R.E 
- AIRO 
- S.R.L 

Customer: Metsec plc Hepsec Division

BTC 17503A: Page 9 of 11

